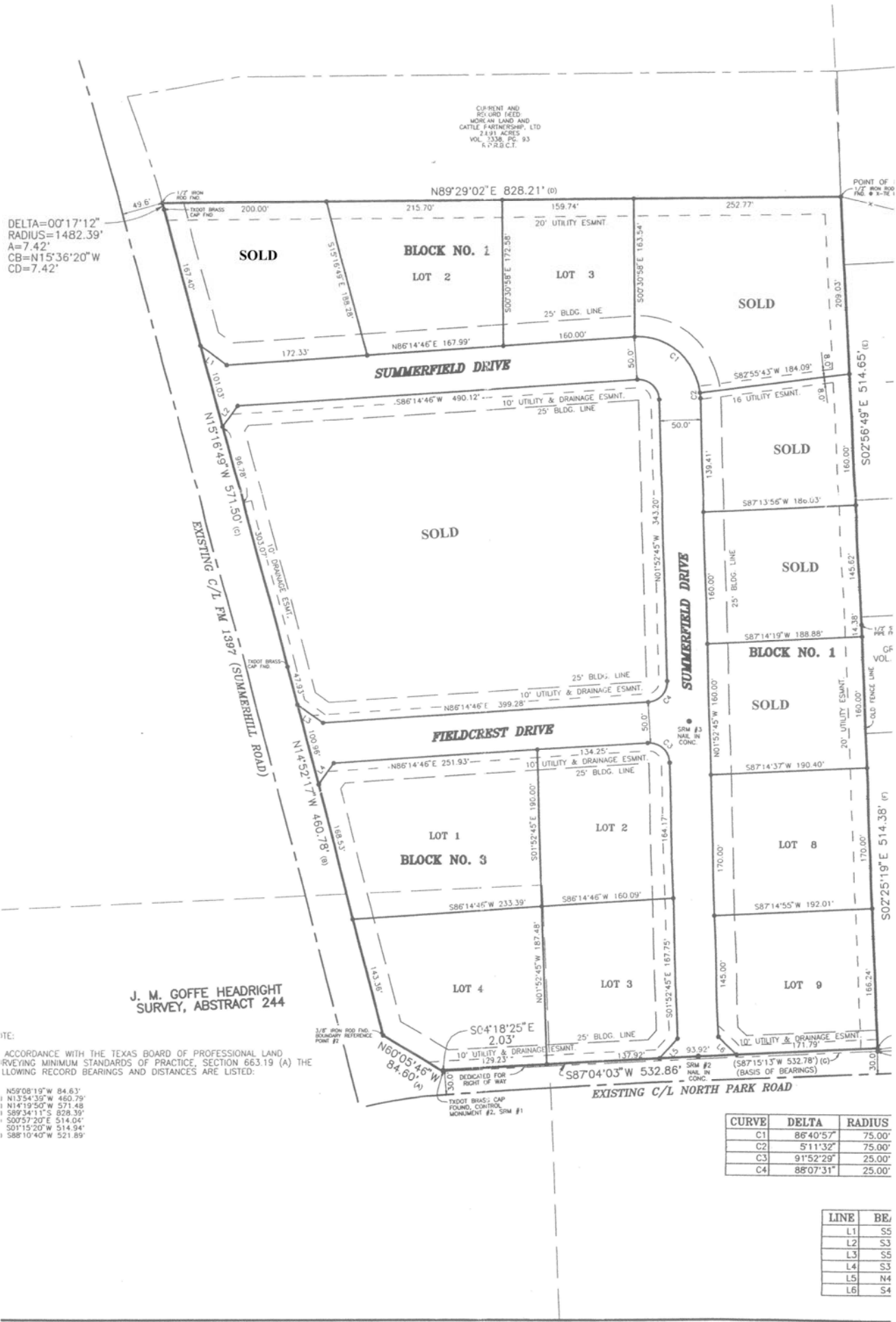


CURRENT AND
 RESURVEYED
 MORE AN LAND AND
 CATTLE PARTNERSHIP, LTD
 24811 ACRES
 VOL. 3338, P.C. 93
 R.V. 2, B.C.T.

DELTA=00°17'12"
 RADIUS=1482.39'
 A=7.42'
 CB=N15°36'20"W
 CD=7.42'



J. M. GOFFE HEADRIGHT
 SURVEY, ABSTRACT 244

IN ACCORDANCE WITH THE TEXAS BOARD OF PROFESSIONAL LAND SURVEYING MINIMUM STANDARDS OF PRACTICE, SECTION 663.19 (A) THE FOLLOWING RECORD BEARINGS AND DISTANCES ARE LISTED:

- 1. N5°08'19"W 84.63'
- 2. N13°54'39"W 460.79'
- 3. N14°19'50"W 571.48'
- 4. S89°34'11"S 828.39'
- 5. S00°57'20"E 514.04'
- 6. S01°15'20"W 514.94'
- 7. S88°10'40"W 521.89'

CURVE	DELTA	RADIUS
C1	86°40'57"	75.00'
C2	5°11'32"	75.00'
C3	91°52'29"	25.00'
C4	88°07'31"	25.00'

LINE	BEARING
L1	S5
L2	S3
L3	S5
L4	S3
L5	N4
L6	S4