



Contact us TODAY for additional information at 903-794-3606 or

Email: Donovan@schimmingcompany.com

NOW LEASING

5407 PLAZA DR.

2,292 Square Feet

1st Floor:

- 4 offices
- Large conference
- Coffee bar with small kitchen area
- ADA restroom
- File/copier space

2nd Floor:

- 2 large conference / office / classroom areas
- storage

Professional Office centrally located near Christus St. Michael Health Care Center, Collom & Carney Clinic, and a variety of professional services, including attorneys, CPAs, real estate offices, banks, insurance agencies, physicians, and restaurants.



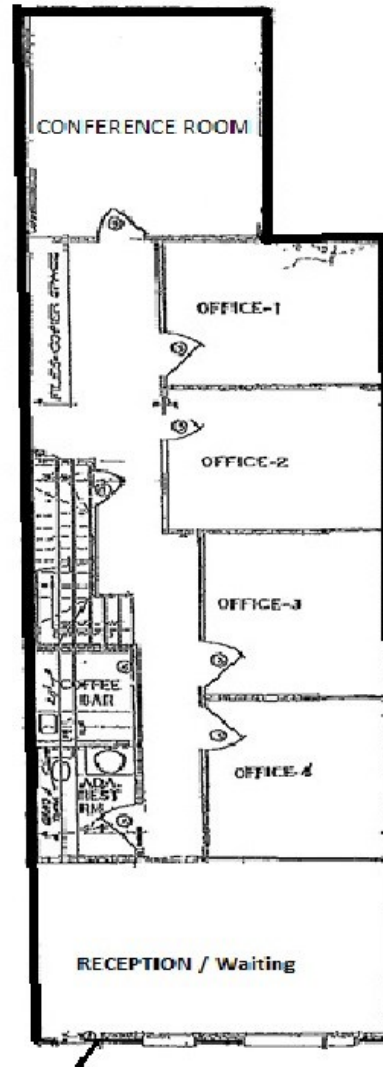
The information provided herein was obtained from sources believed reliable; however, Schimming Company makes no guarantees, warranties or representations as to the completeness or accuracy thereof. The presentation of this property for sale, rent or exchanges is submitted subject to errors, omissions, change of price or conditions, prior sale or lease or withdrawal without notice.

FLOOR PLAN

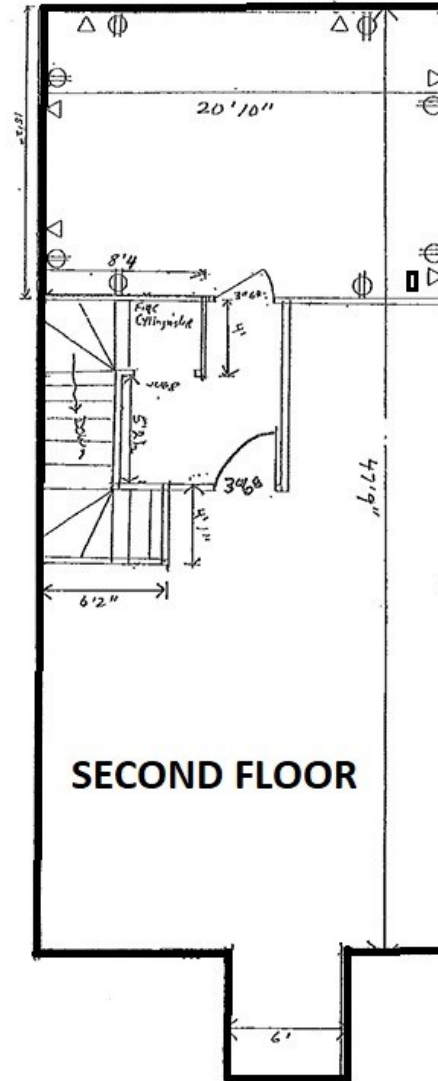
1st Floor: 1,229 SF

2nd Floor: 1,063 SF

5407 PLAZA DRIVE



FIRST FLOOR



SECOND FLOOR



Contact Us Today!

To learn more or schedule a tour:

☎ 903-794-3606

✉ Donovan@schimmingcompany.com

🌐 www.schimmingcompany.com

The information provided herein was obtained from sources believed reliable; however, Schimming Company makes no guarantees, warranties or representations as to the completeness or accuracy thereof. The presentation of this property for sale, rent or exchanges is submitted subject to errors, omissions, change of price or conditions, prior sale or lease or withdrawal without notice.